

BENEFITS

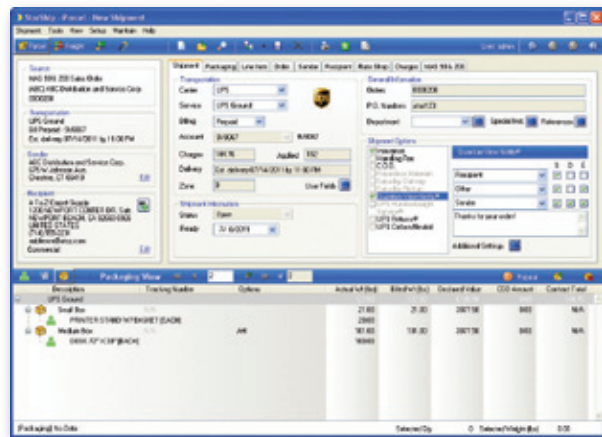
- Gain immediate efficiencies in shipment processing, accounts receivable and customer service.
- Swiftly convert orders into shipments, leveraging item detail to automate rating and document printing.
- Access accurate shipping rates across parcel and LTL carriers and gain the potential for significant cost savings with regional carriers such as OnTrac and Spee-Dee.
- Prevent invoicing delays with accurate shipping charges added to customer invoices at the time of shipment.

Sage 100 ERP

To achieve and maintain strong customer loyalty, it's essential to get your inventory in the hands of your paying customers as quickly and economically as possible. *StarShip* allows you to do just that with a bi-directional interface that's flexible and easy to use.

The highly integrated interface provides access to item level detail that allows you to print international documents or the *Bill of Lading (BOL)* with little effort. You also have the ability to personalize field maps and define order or shipment fields and translations. The flexible design allows you to define fields using a one-to-many relationship.

For example, the field ship via can transfer information to carrier, method and billing type.



Streamline your entire workflow

StarShip can also leverage data that was defined via a warehouse management solution such as *Scanco* or *ScanForce* allowing the warehouse to simply scan the invoice number to gain immediate access to package and item detail within the ship screen.

Integration with EDI solutions such as *TrueCommerce*, *MAPADOC* and *Edisoft* round out the offering giving you more options to boost productivity. ■

WORK LESS. SHIP MORE.





Features

Sage 100 ERP

- Real-time access to orders, invoices or customers
 - Automatically create invoices including freight charges and tracking detail
 - Line item integration to further automate international and LTL shipments
 - Consolidate multiple orders on one shipment for maximum savings
-

Sage 500 ERP

- Real-time access to shipments
 - Pull package/item information from Sage 500 ERP OR wait to define this during the shipping process
 - Line item integration to further automate international and LTL shipments
 - Automatically update the shipment with freight charges, tracking detail and package/item information
-

Update Item Information on the Fly

StarShip stores shipping-related information that may not be stored in item maintenance (Schedule B, NMFC, freight class and more) and updates this information as you ship, which eliminates the need to maintain this information in the Inventory module. It is also used to auto-generate documents such as the Commercial Invoice or Certificate of Origin as well as the BOL.

Print Pallet and Package Labels

StarShip supports both laser and thermal formats. Packing lists can also be generated for both.

Intuitive Data Mapping

Personalize your shipping fields and translations with an easy-to-use interface that requires no custom coding.

Dashboard

Allows the entire office to access shipment history, run reports and track shipment status.

Multiple Carriers Supported

- Parcel: UPS, FedEx, USPS (Endicia), DHL, OnTrac, Spee-Dee
 - Freight: UPS Freight, FedEx Freight, YRC, Freightquote.com, Freightview
-

Optional Interface

Masterform - prints HazMat documentation for UPS shipments

WORK LESS. SHIP MORE.

